

NOVA DOCK SEALS - FPH SERIES

EQUIPMENT SPECIFICATIONS

NOVA FPH Series Seals accommodate 10' and higher doors to fit a wide variety of trailer heights. They feature a hood style head curtain in place of a head pad with fiberglass stays and metal pipe in the fabric hood to maintain shape and serviceability.

- Cover material and wear pleats are top grade fabrics providing superior performance
- High density urethane foam provides long life and excellent resiliency characteristics
- Select grade treated wood framing
- Heavy duty galvanized mounting hardware
- Brass grommets with spur washers for venting
- Velcro® brand fasteners
- Full height yellow guide stripe standard



DESCRIPTION:

Base Fabric:

- Vinyl - 18 oz., 22 oz., 40 oz.
- Hypalon* - 16 oz., 40 oz.
- Max 60

Reinforcing Fabric (Multiple Layers):

- Vinyl - 18 oz., 22 oz., 40 oz.
- Hypalon* - 16 oz., 40 oz.
- Max 60

Wear Pleat Spacing:

- WP4 • WP8 • WP16

Wear Face:

- Side Pad • Hood

Scuff Guard:

- 4' • Full Height

Bottom Door Flaps:

- 1 to 3 Sides

Fabric Colors:

- Black is standard - call for other color options

OPTIONS:

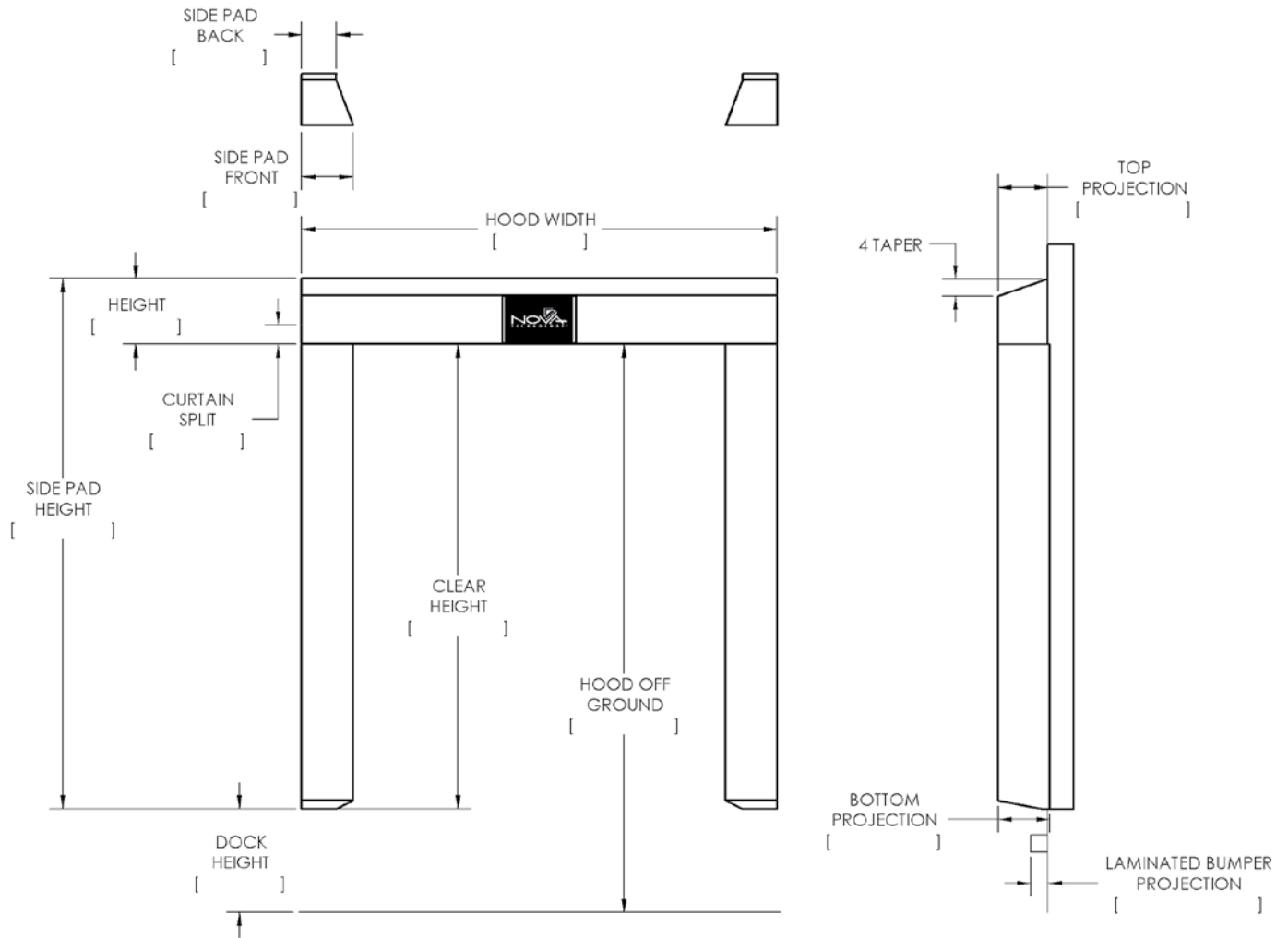
- Wear Pleats
- Wear Face
- Scuff Guards
- Bottom Door Flaps
- Pull Rope System
- Flame Retardant Foam & Fabric
- Top Corner Pleats Only
- 24" High Yellow Guide Stripe
- Block Outs
- Galvanized Metal Backs
- 2" Foam Filled Front on Hoods

*Call for availability



DOCK SEALS - FPH SERIES

SPECIFICATIONS



MODEL FPH: _____	QUANTITY: _____	COMPANY: _____
DOOR WIDTH: _____		SALESPERSON: _____
DOOR HEIGHT: _____		
DOCK HEIGHT: _____		
DOCK BUMPER/LEDGE COMBINED PROJECTION _____		JOB NAME: _____
DRIVE APPROACH: <input type="checkbox"/> LEVEL <input type="checkbox"/> INCLINED <input type="checkbox"/> DECLINED		
SPECIAL INFORMATION: _____		

